

The MiniCam HD

prestaigne
□□□□ charter

CASE STUDY

New Product
Information

The MiniCam HD



Found exclusively at Presteigne Charter, new high definition innovation – the MiniCam HD – is a complete miniature camera system that can be utilised as a HD replacement for the many point-of-view cameras used in areas where conventional cameras are unable to be deployed.

Broadcasting challenges can easily be overcome by applying the MiniCam HD in sport and light entertainment events and also in either studio or OB. Packed with features that make it quick and easy to install, operate and use, the HD MiniCam Pan & Tilt now allows mini cameras in HD to be placed as they used to be before HD, to produce the same close-up live action shots that are loved by viewers.

Designed specifically to be close to the action, the MiniCam HD camera head is available as either a stand alone camera or can be integrated with a full pan-and-tilt mechanism – currently the only HD mini camera to do so. This provides the freedom of a full 360° pan and 180° tilt, adding extra versatility to its remote operation. A zoom and a full focus lens is also a part of the system allowing yet more freedom to capture shots both near and far (a wide angle and telephoto adaptors are also available). The inclusion of a fibre-optic link means the camera can be easily utilised over long distances or in environments where fibre is now part of the infrastructure and with the very minimum of set-up.

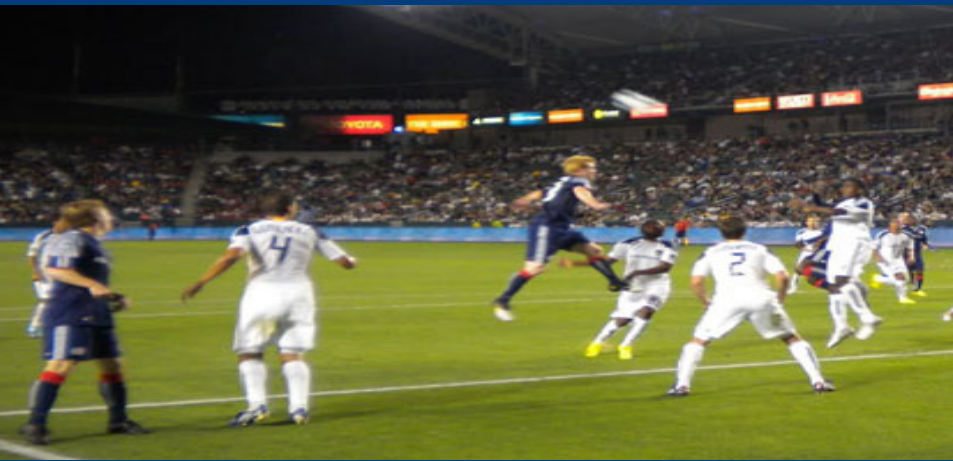
www.presteignecharter.com

The MiniCam HD

CASE STUDY

New Product Information

The MiniCam HD



Alongside the MiniCam HD's considerable capabilities, the entire camera head measures only 180 x 82 x 58mm. The camera is available with a single HD SDI output. When using the integrated head with the pan and tilt, it can connect up to 30m via a 15-way cable to the Fibre Head Adapter. This offers the choice of using either SMPTE hybrid fibre cable, 'fibre-only' cable, or triax (available 4th quarter) which connects to the 1RU CCU. When using hybrid cable or triax, power is supplied down the cable, but for pure fibre cable local 12VDC power is provided by clipping a battery onto the V-Mount plate on the top of the Adapter or via an external 12v power supply.



The MiniCam HD takes up little room in either OB truck or studio. The camera cable connects to the 1RU 19-inch rack-mount CCU that provides either two HDSDI outputs or is switchable to both VBS and YC. Using the gen-lock reference (625-line or tri-sync) ensures that the CCU output is always in sync, so the MiniCam HD system affords a remote camera system that is accepted by the vision mixer without having to use a frame synchroniser. The HDSDI jitter sits within the SMPTE specification, ensuring trouble-free operation with downstream equipment. Reliability is also enhanced with the ability to locate potential problems using the CCU's internal test procedures that include checking the fibre and gen-lock inputs.

For control, the MiniCam HD OCP panel will be instantly familiar to users of existing OCPs. It has all the same functions that are found on the OCPs of full broadcast camera heads including shutter, gain, detail, gamma and full colour correction.

Camera Specification

- 1080i 59.94, 1080i 50 & 720P 59.94 720P 50
- Lens: 5.1mm wide – 51mm tele
- Horizontal resolution - wide PAL & NTSC 530 lines
- S/N 50db
- Gain -3 to +18db (8 steps)
- Shutter speed 1/2 to 1/10000 sec (21 steps)
- Video outputs: HD SDI, VBS & YC
- Power: 6-12v DC 410 mA (HD camera)
12v DC 500mA (integrated HD camera pan & tilt)
- Weight: 230g (camera only)
640g (camera and Pan and Tilt)
- Dimensions: 50 x 57.5 x 87.9mm (whd)
- MiniCam HD covers the full range of the popular HD formats of 1080i and 720p, and can also be switched to PAL